

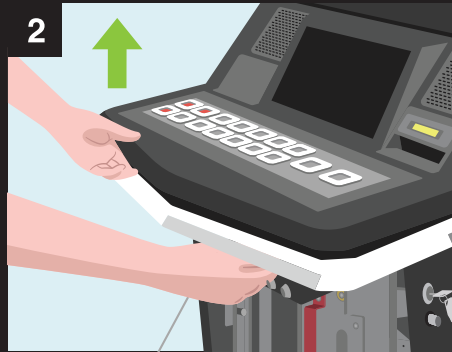
# Concerto Help Card

CONCERTO™

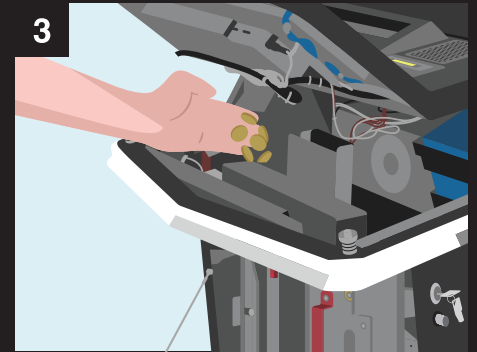
## Hopper Refill



1 OPEN BOTTOM DOOR



2 OPEN TOP DOOR (Using lever under play-deck)



3 ADD COINS TO HOPPER



4 INSERT AND TURN AUDIT KEY



### 5 COMPLETE HOPPER REFILL

1. Select EXIT.
2. Select EXIT again.
3. Select Hopper Refill.
4. Press the Collect and Spin buttons at the same time.



6 TURN AUDIT KEY AND REMOVE



7 CLOSE ALL DOORS